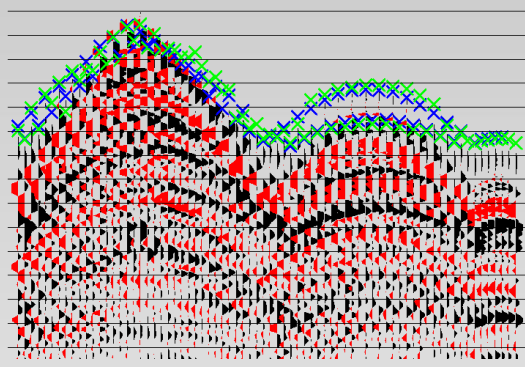
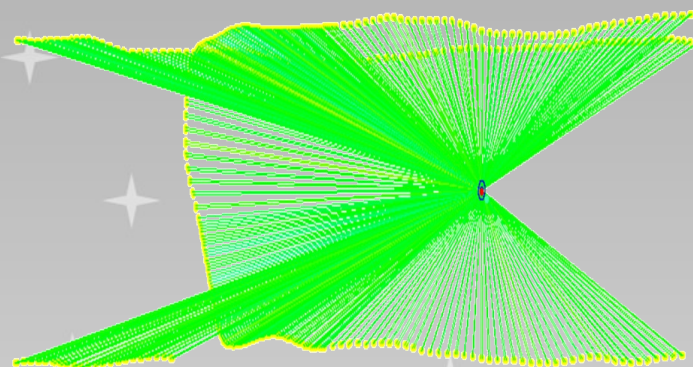


GeoMetis BX

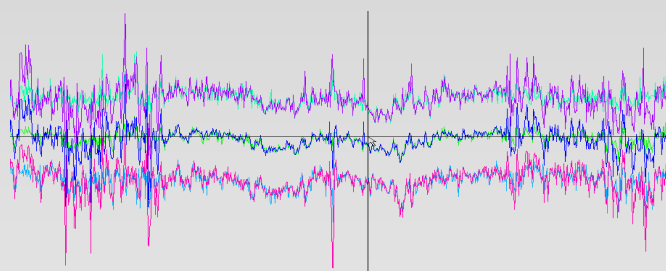
Marine OBS / TZ / Nodal Geometry Processing and Data Analysis

GeoMetis is a quality control and data processing software suite for navigation and positioning data.

GeoMetis BX is for use with shallow water Ocean Bottom Cable, Transition Zone and Nodal seismic surveys.



Uses a unique method of reverse engineering existing data to locate problems in processed data.



Being flow based, *BX* provides the user with significant flexibility to establish the ideal way to analyse and / or process source and receiver positions



BX

Applications

- ◇ Quality control by Client Representatives
- ◇ Aid to processing and troubleshooting navigation data
- ◇ Processing and re-processing of current or historic navigation data
- ◇ Field Quality Control during data acquisition
- ◇ Investigation of data prior to purchasing or re-processing

Features

- ◇ Runs on Laptop or Desktop computers
- ◇ Small physical footprint
- ◇ Intuitive software, easy to learn and use
- ◇ Fast data analysis
- ◇ Flow based processing for maximum flexibility and user control
- ◇ Built-in viewers to check UKOOA P1, P2 and SPS files for format compliance
- ◇ Incorporates **GeoMetis SPSCheck**
- ◇ Check source data has been recorded and positioned correctly
- ◇ Check shot timing with text error reports and graphical display
- ◇ Check data recording using simple graphical displays that simplify error detection
- ◇ Compare *GeoMetis* and contractors source and receiver positions
- ◇ Combine data from multi ping runs on a receiver line to compute the SOS
- ◇ Display velocity fields
- ◇ First Break picking and processing from SEG-Y files
- ◇ QC for Nodal surveys
- ◇ QC for USBL data

Requirements

Operating System Hardware

Microsoft Windows XP / 7 / 10
Runs on 32 and 64 bit machines

P1 and P2 formats courtesy of the United Kingdom Offshore Operators Association (UKOOA).
SPS data format courtesy of Society of Exploration Geophysicists (SEG). All rights acknowledged.